



Eastbury Grove, London  
Guide Price £1,400,000

**WHITMAN & CO.**

SALES · LETTINGS · COMMERCIAL



An immaculately presented five-bedroom period family home, ideally located in a sought-after residential area, offering easy access to a wide range of local amenities.

The property comprises five bedrooms, two bathrooms, a formal front reception room, a stunning 36' bespoke kitchen/breakfast room, a guest cloakroom, utility cupboard, and a private west-facing landscaped garden.

Conveniently situated close to Turnham Green Tube Station and a number of local bus routes, as well as the extensive array of shops, bars, and restaurants on Chiswick High Road. Offered with no onward chain.



# Eastbury Grove, W4

Approximate gross internal area

171.59 sq m / 1847 sq ft

(Including Eaves Storage)

Eaves Storage : 9.56 sq m / 103 sq ft

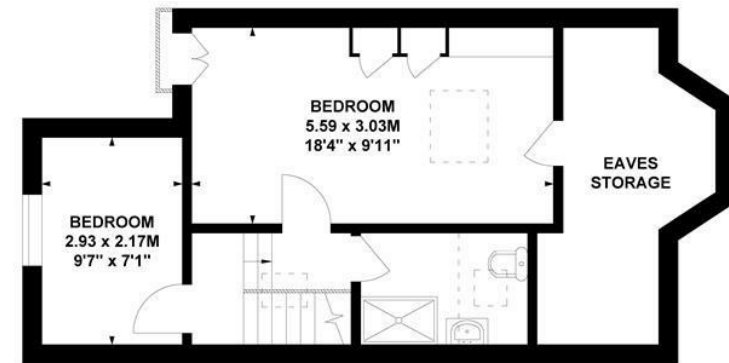


Key :

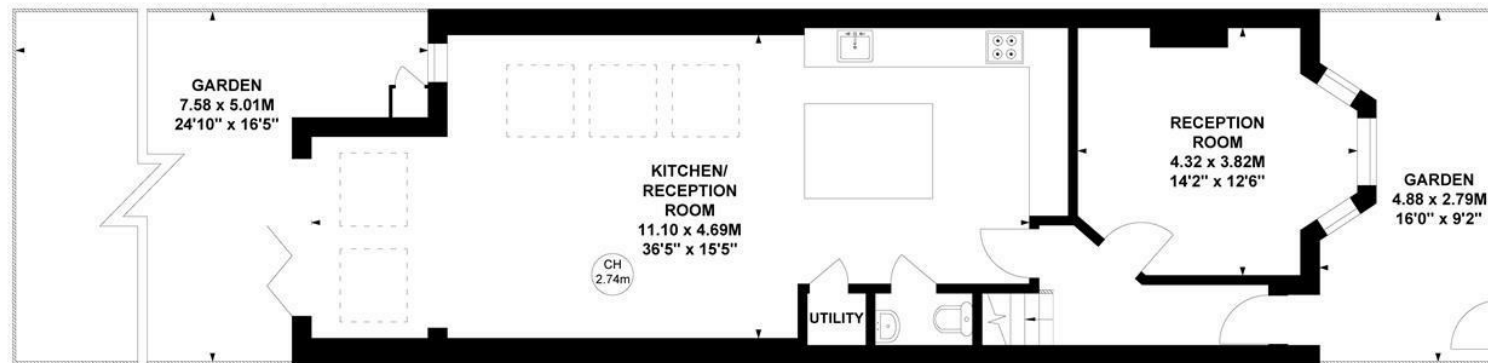
CH - Ceiling Height



First Floor



Second Floor



Ground Floor

Not to scale, for guidance only and must not be relied upon as a statement of fact.

All measurements and areas are approximate only

- Five bedrooms/two bathrooms
- Fantastic transport links
- Sought after location

- Private west-facing garden
- 36' bespoke kitchen
- No onward chain

Tenure - Freehold  
Local Authority - Hounslow  
Council Tax - Band F

